

COMMUNITY

Arch. Renzo Gennaro





BIG ROOM NEW THEATRE

bolzano - ITALY - 1999

Complex work of synthesis among functional, acoustic and architectonic exigences in the building projected by the arch. Marco Zanuso. It was conceived and it is always used for theatrical performances, for symphonic concerts, opera, workshops and other happenings.

cover photo: the hall
left & right: views of the room with acoustic panels





TOWN THEATRE OF GRIES

bolzano (ITALY) - 1998

Restructuration of the Town Theatre of Gries, which was destroyed by a fire in the '80s.

It is an hypogean structure that has been intensively used while waiting for the New Town Theatre, with which today it keeps on working in synergy.

left & right: images of the villa





ENLARGEMENT CEMETERY & CREMATORIUM

bolzano (ITALY) - 1998

The tombstones are distributed on three large terraces surrounded by nature from which there is a panoramic view of the whole valley of Bolzano, reducing the sadness that usually one feels in a cemetery.

Fulcrum of the composition is the tower that links vertically the different levels and recalls with respect the medieval castles of the zone.

left: exterior view with tower
right: entrance to the hall of ceremonies
next pages: exterior views









ATESTINA BANK

este (ITALY) - 2009

Realization of a new bank institution in Veneto. The large windows allow a view on the panorama of the Euganei Hills, the constructive typology allows to improve the value of the industrial zone.

Outside, a park stands around the halls, inside offices for the direction, representance and congress halls, bank agency and a floor dedicated to commercial services.

left: detail of the facade
right: the entrance





METRO LIGHT RAIL STATION

bolzano (ITALY) - 2011

Competition for a light-rail station in the outskirts
of Bolzano.

It's part of a larger study to providing the city
outskirts with a public transport service by rail.



left & right: the access to the station



PARKING CENTRE

bolzano (ITALY) - 2001

The project won the prize for the re-organization of the square G. Verdi.

The work links the big parking, situated over the railway with the town centre.

left: the entrance
right: details





INTA EXPO 2008

region cuyo - ARGENTINA - 2008

Ephemeral architecture for the most important exhibition of the institution of Argentinian agricultural technology INTA 2008 (Instituto Nacional de Tecnología Agropecuaria).

It participated in the 12th edition of the "Bienal Prize SCA CPAU ARCHITECTURE DE ARGENTINA".

The project has been selected and won first prize.

left & right: the temporary installations









CIVIC AGORA'

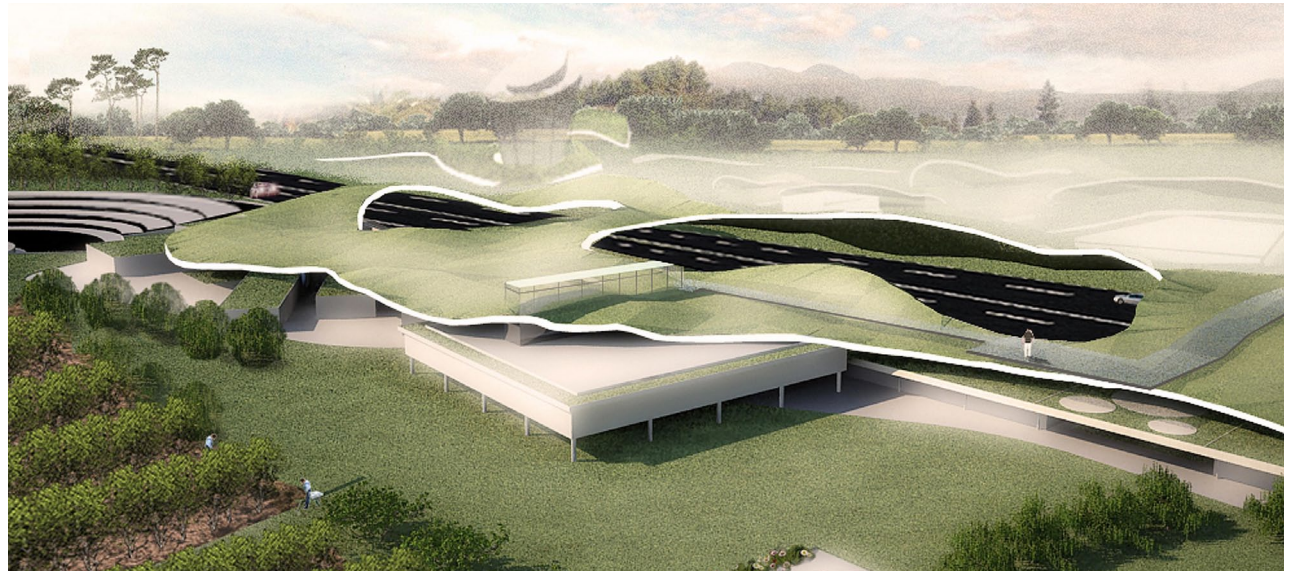
saletto - ITALY - 2010

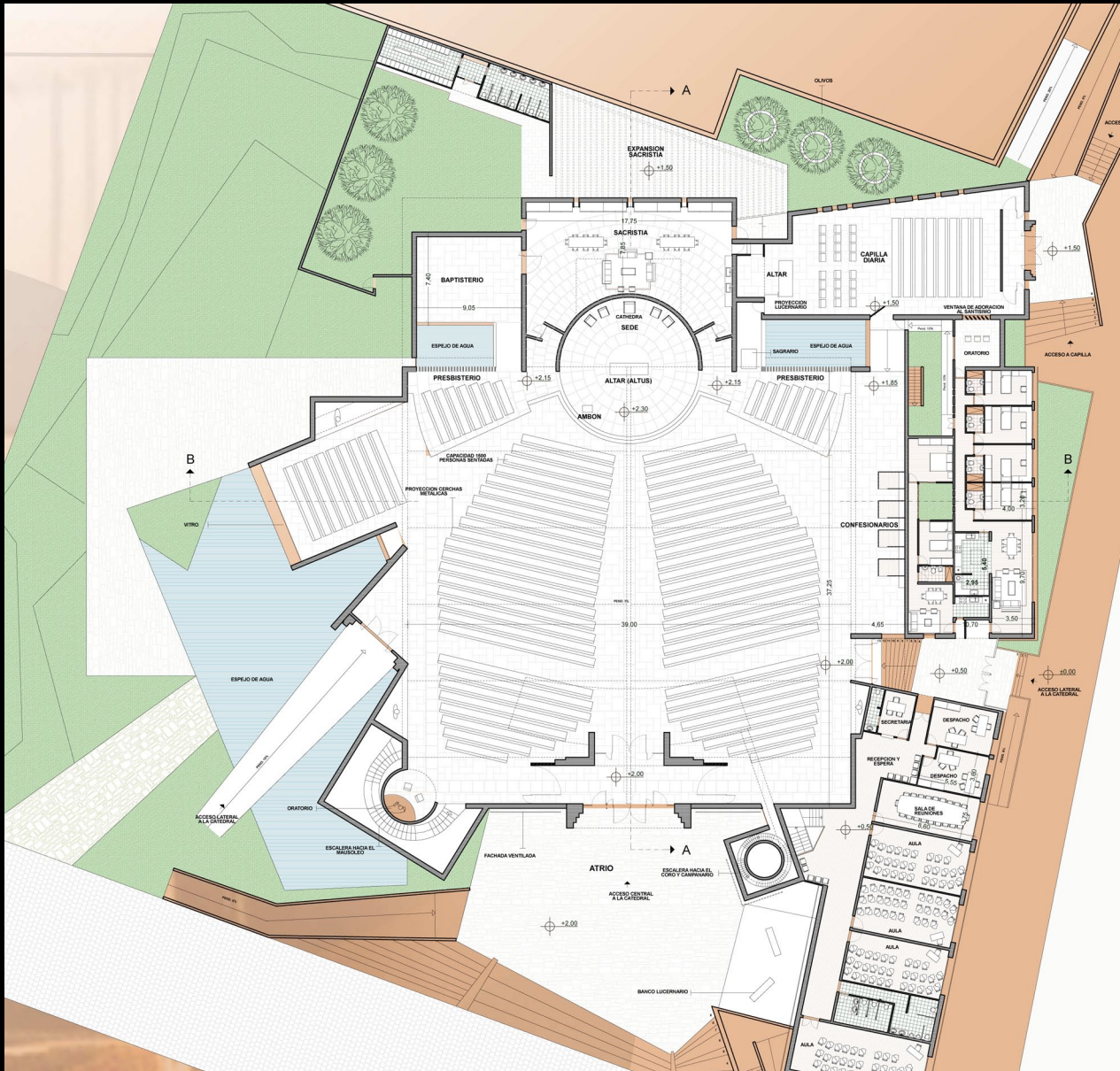


Project for a cultural park, including a theme park, a water park, spaces for exhibitions and events.

The study is part of a larger project including the preparation of a new master plan for the city and its surrounding areas.

left: panoramic view - aqua parc
right: civic center - boulevard





CATEDRAL OF MENDOZA

mendoza - ARGENTINA - concept

Competition for the construction of the new cathedral of the city.

Underlying themes of the project were the interaction between space and the mystical feeling of light being a cultural symbol of God.

left: generale plan
right: the church altar





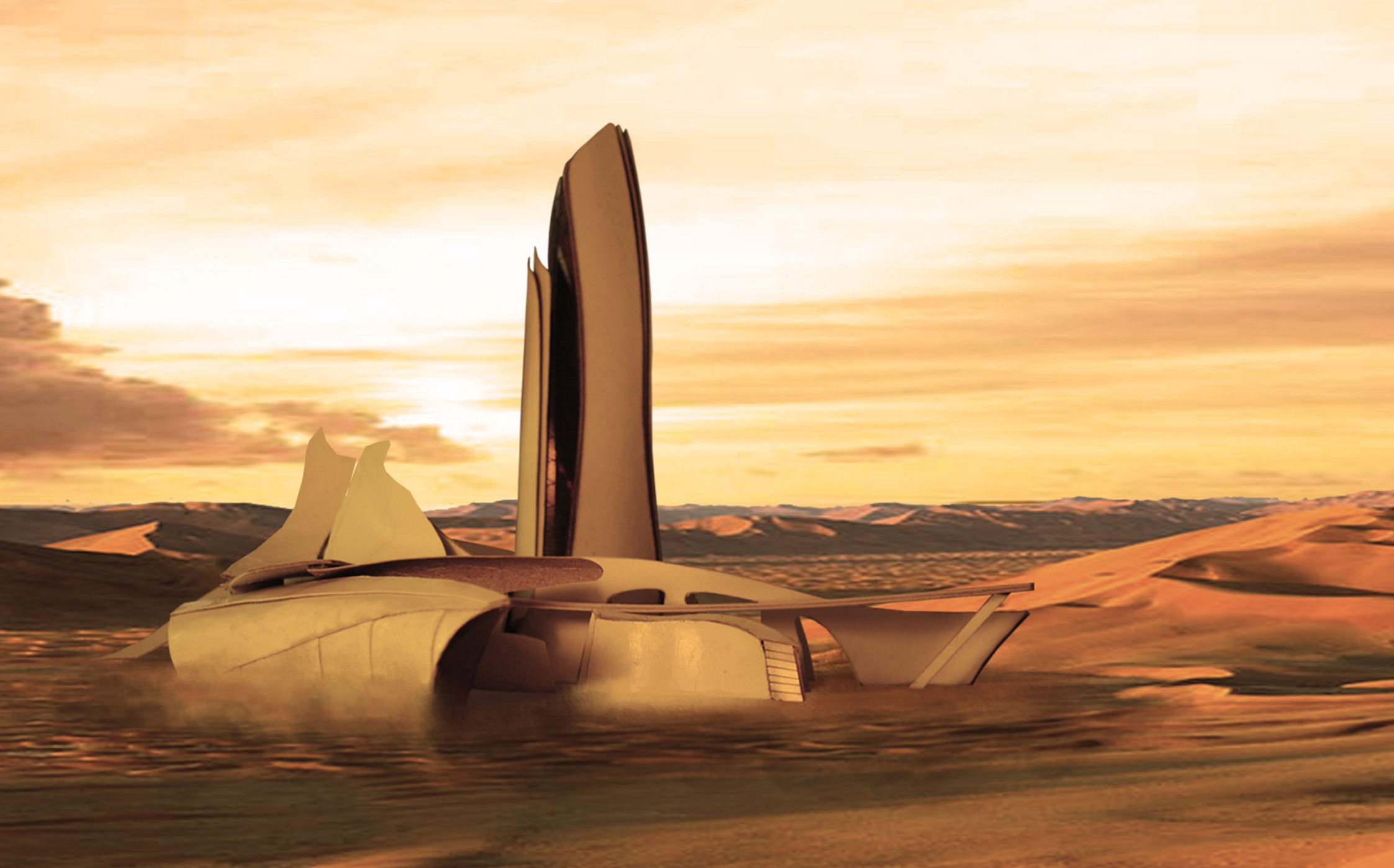
MILLENNIUM MOSQUE

UAE - concept

Concept for a mosque of the third millennium.
The project incorporates the most ancient
cultural traditions and technology (similar to
the Roman aqueduct) and proposes a new
dimension, larger with a modern touch.

left & right: views of the mosque









MUSEUM OF S. MARTIN

mendoza - ARGENTINA - concept

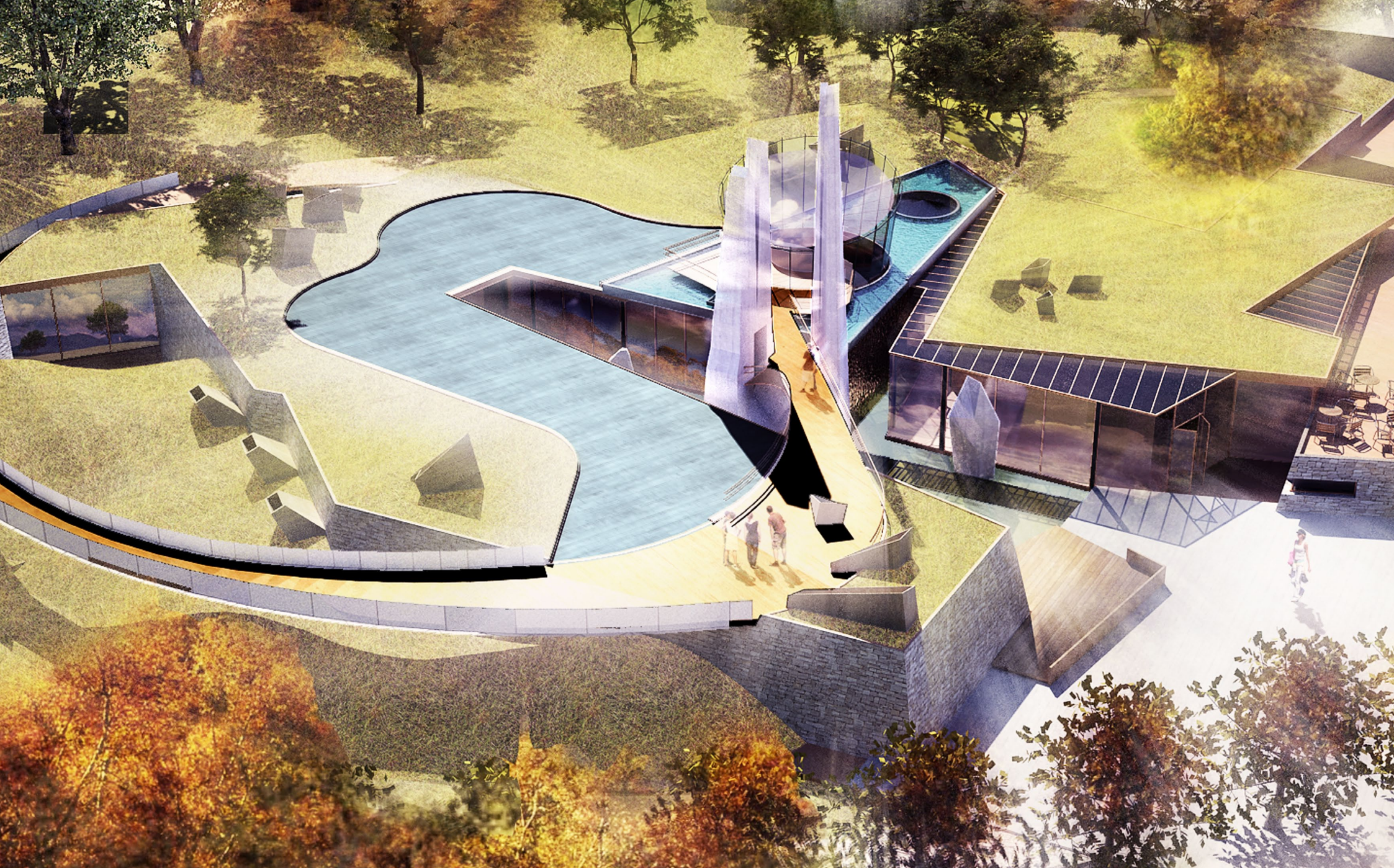
Competition for the S. Martin Museum of Mendoza.

Particular attention was given to the position of the building, which becomes an element of its surroundings.

Some design elements inspired by the surrounding landscape become icons of the museum.

left & right: views of the project
next pages: perspective view - general plan







Terraza Mirador
-2.40

Patio Inglés
Acceso Área
Administrativa
-5.75

-5.75
Acceso Peatonal
Museo desde
calle Pedro Molina

Acceso Principal
Museo desde
Memorial de la Bandera
-1.00

Acceso Ascensor

Área de Exposición
Exterior

Sala Lectura al
Aire Libre
-5.70

WORK ARCHITECTS

WORK ARCHITECTS is a permanent laboratory of architecture where the main objective is to guarantee the high level of professional quality of the architects.

The intricate weaving of competences and the variety of interdisciplinary collaborations creates the unique community of resources necessary for the creation of the complete architectural projects that we offer. It is also at the core of the spirit of who shares this ambitious plan.

The members of the group are stimulated to improve their own specific skills and at the same time being inspired by the different work groups competences. The intricate web of knowledge and capability both within the WORK ARCHITECTS group and beyond is part in being part of an incomparable asset.

GEOSS ENGINEERING

The partnership was founded in 1998 to organize the architectural complexity of the production process and to increase the control on quality of the overall project.

Since then it has been coordinating many works as:

- Planning of territory, either in large scale or in effective works
- Engineering works within architectural and technological projects
- Leadership of complex works and quality control on projects and fulfilments



ARCH. RENZO GENNARO
senior partner & founder

bolzano, march 2003 : inauguration of the office



All the materials in this site (photos, texts, drawings etc...) belong to WORK ARCHITECTS if not differently specified.
The reproduction even partial of the material in the site, with any mean, analogical or digital, is not permitted without the written agreement of WORK ARCHITECTS.
The copy and or the print is permitted only for personal use and not for a commercial use.

LAST UPDATE: FEBRUARY 2014

COMMUNITY

www.workarchitects.eu
info@workarchitects.eu

Via Avogadro 1 - 39100 Bolzano - ITALY
T. +39 0471 500 055 - F. +39 0471 500 022